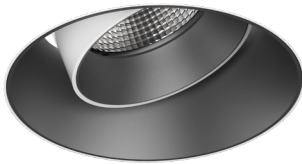
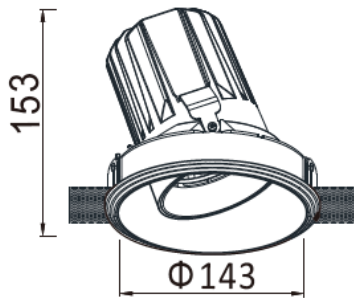




ELVIS SR-C106 (Trimless)



Effortlessly accentuate specific areas or features with the Elvis downlight. Its adjustable design can accommodate the most varied applications and boasts an anti-glare device as well as an efficient heatsink ensuring the lifetime of the source. The Elvis series offers fixed, adjustable, IP, trimmed and trimless designs making this series a versatile solution for your lighting needs. This series is designed and manufactured to deliver optimum performance in any environment.



Model	Source Power (W)	System Power (W)	Source Lumen (Lm) (CRI>90, 3000K)	System Lumen (Lm) / Beam Angle (CRI>90, 3000K)			
				Narrow (12°/10°/10°/12°)	Narrow (20°/20°/20°/21°)	Medium (43°)	Wide (58°)
SR-C106-J	17	19	2269	2176	2120	2099	2108
SR-C106-K	25	27	3107	3030	2936	2896	2928
SR-C106-L	32	35	3985	3781	3676	3620	3689
SR-C106-M	36	39	4456	4338	4245	4177	4220

CRI	CCT	Material	LED Lifetime	Colour	Voltage	Dimming
>90	3000K/4000K	Aluminium	L80(12K) > 66,000 hrs L90 (12K) > 41,500 hrs	BK / WH	220-240V	Available on request



Accessories

(available on request)



Honeycomb Louvre



Elliptical Lens



Glass Lens

Photometrics

(standard beam angles, alternative available on request)

