

CLUBLIME

HEALTHCARE LIGHTING CASE STUDY



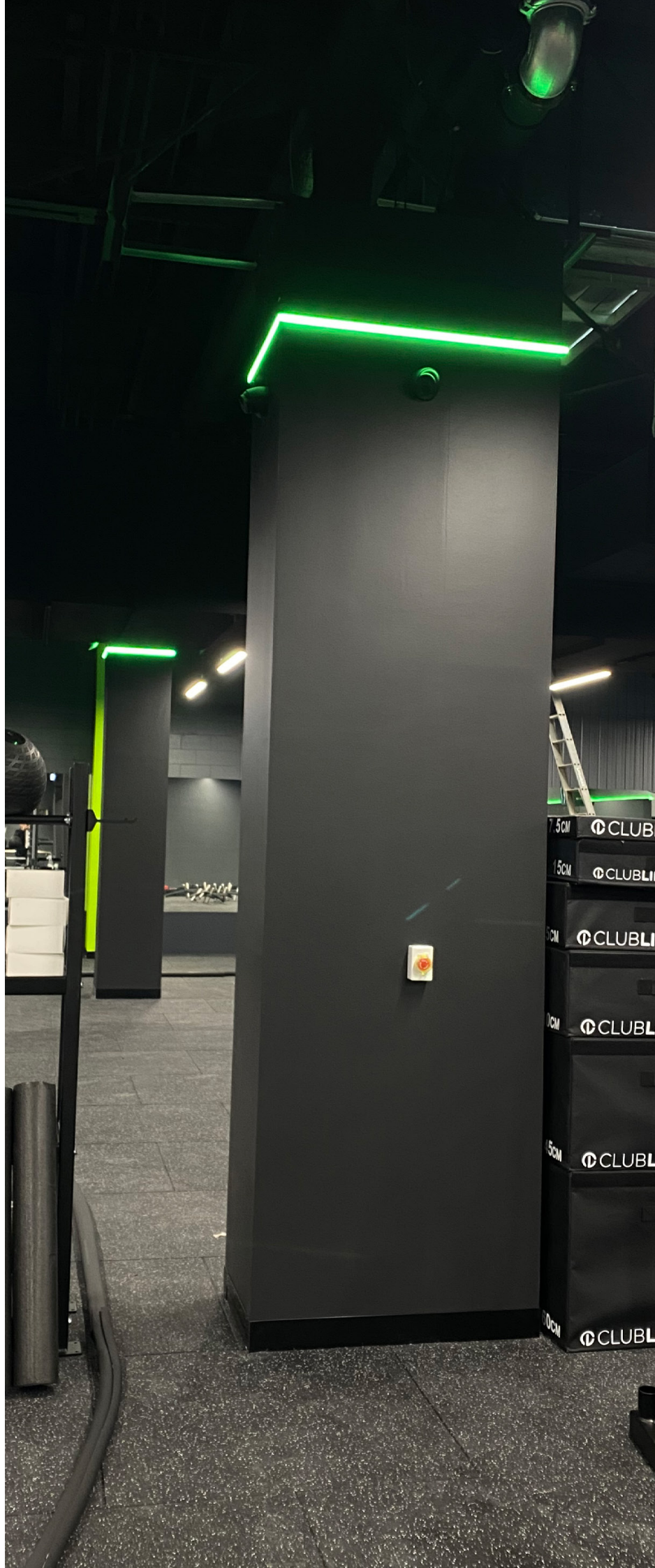
THE POWER OF SMART LIGHTING CONTROLS FOR brand consistency

Club Lime is a widely recognised gym franchise with 27 gyms spanning across Australia. The gyms are known for their distinctive green colour scheme and offer a comprehensive range of health and fitness services. Currently, the brand is actively expanding its gym presence. Our strong client relationship was the key factor in securing the contract. The project brief entailed duplicating the design process from a previous project, further developing the original concept.



the challenge

Gyms require a stable, reliable source of light, the system also needs to be easy to use as different staff and trainers will be there daily. Throughout the gym, an aluminium profile with an opal diffuser and RGB LED Strip is used. Optimal lighting plays a crucial role in a gym environment. It is essential to provide adequate, well-distributed lighting that complements the space's functionality and ambience, ensuring safety and an inviting atmosphere for members. It is important that the fitness studios create the ambience and lighting that is associated with its brand.

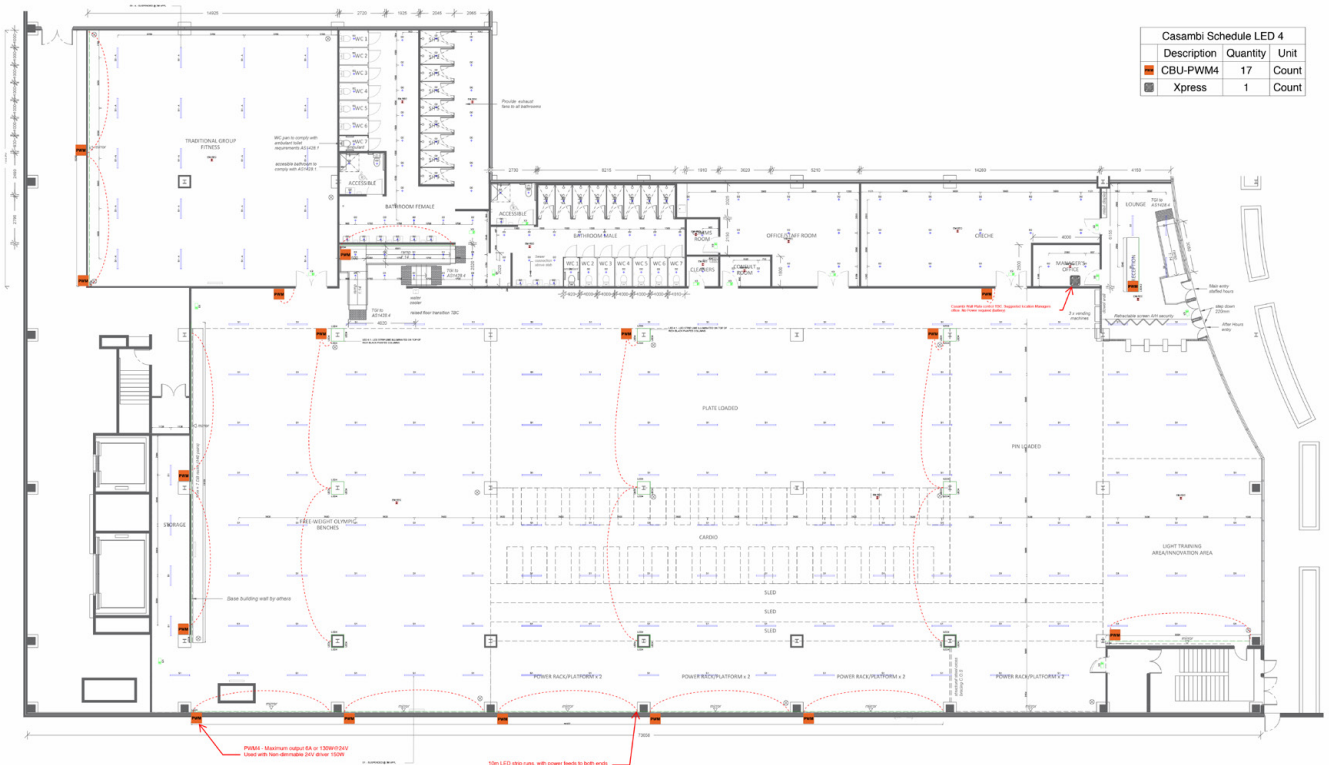


the solution

The challenge encountered revolved around Club Lime's difficulty in replicating their widely recognised specific green colour. To achieve the desired hue, a blend of red and green was essential. Through the advanced colour mixing features within the Casambi app, our team successfully combined amounts of red and green to achieve the distinctive Club Lime colour. Utilising the Casambi controls, once the perfect colour was attained, users can conveniently save these custom scene colours using the pre-save functions on the Bluetooth app, ensuring a user-friendly experience for all.



Check out our video on the Casambi preset scenes colour controls



1 LIGHTING PLAN
SCALE 1:150

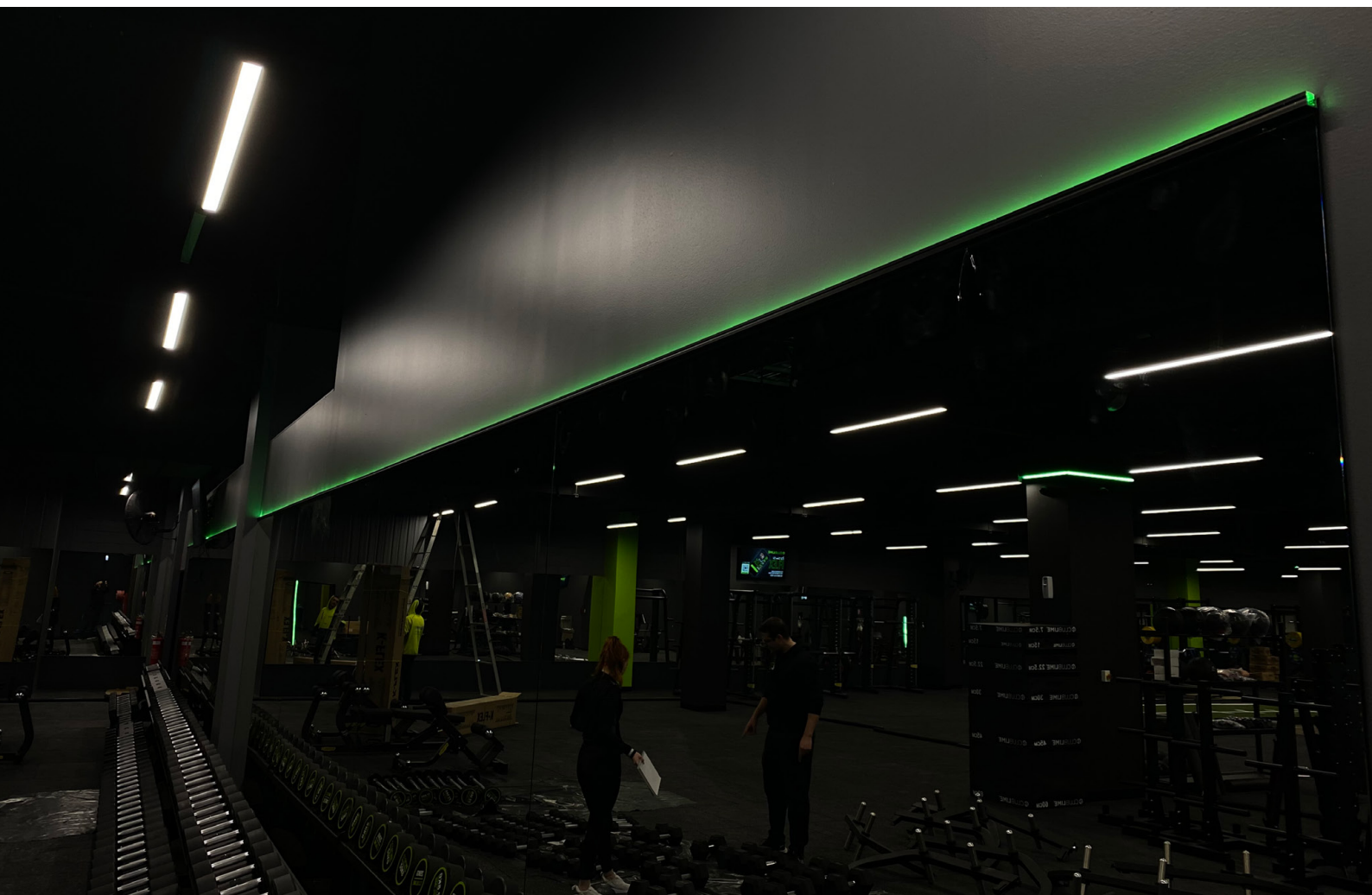
the solution

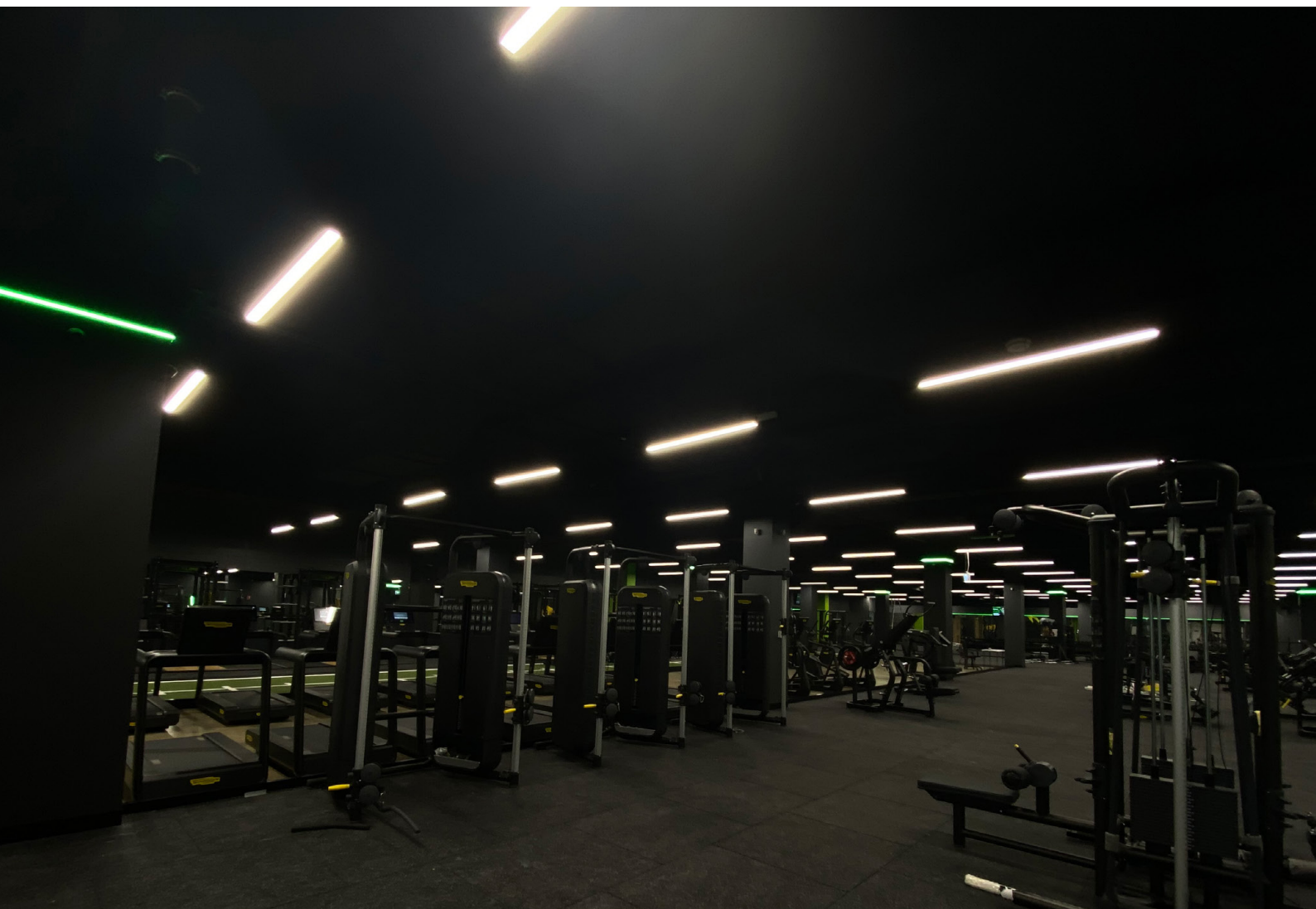
With Casambi, you have the capability to save your preferred lighting themes directly to the Xpress Switch presets within the Casambi function using your smartphone's wireless functionality. This feature allows you to conveniently label and store your desired light colours on the app, ensuring easy access and control. Colour presets were based on the approved colours of the Club Lime marketing team. These included Lime, Limelade and Energize. The presets were pre-programmed into the PWM4s. Each site's network information was uploaded to the Casambi Cloud. The 3 Colour presets are selected with a Casambi Xpress (4-button) Wireless remote.

As the gym's primary colour scheme is black, the customised green light serves as a distinctive colour accent applied throughout the gym.



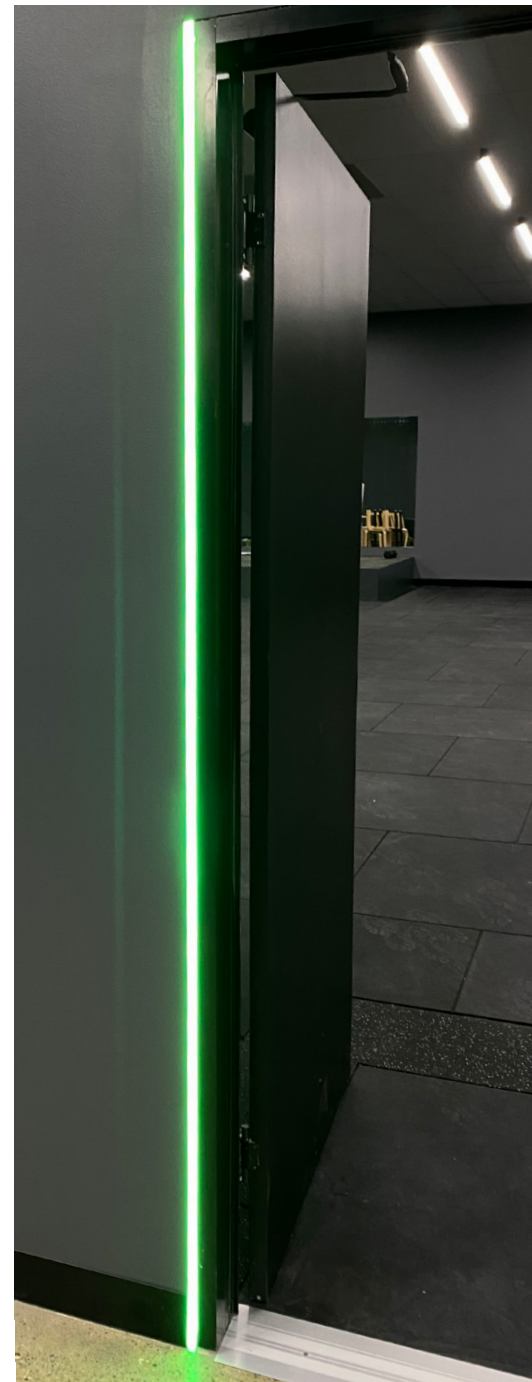
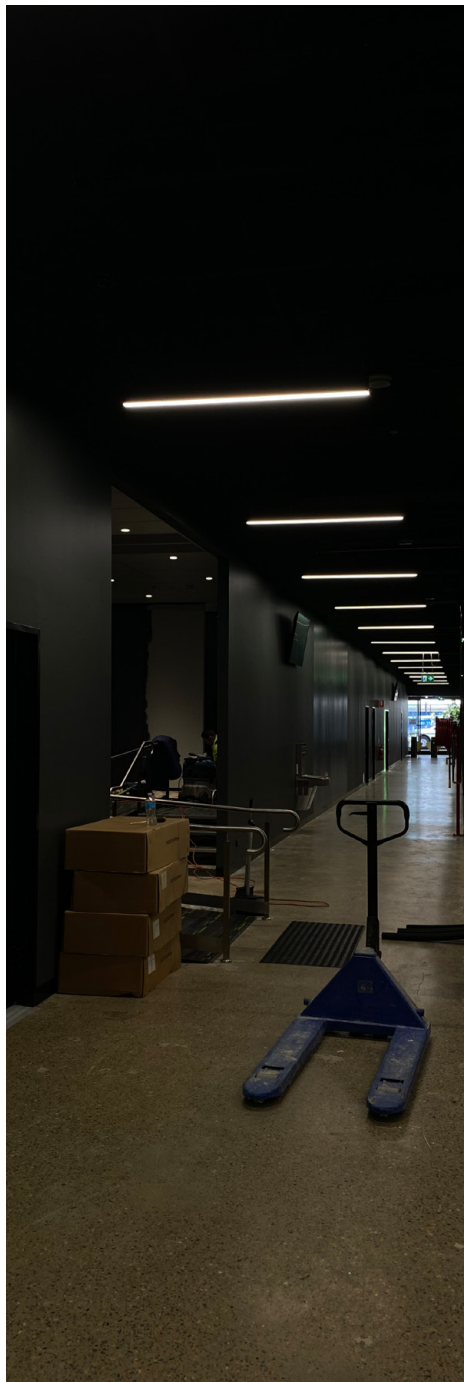
Check out our video on customising the Casambi presets





featured products

- [Visi DR-A443 Downlight](#)
- [Caliber Suspended Linear](#)
- [RGBW in High Profile \(SM1715\)](#)
- [Casambi Xpress Wireless Wall Switch](#)
- [Casambi CBU-PWM4 Bluetooth Controllable 4ch PWM Dimmer](#)





project overview

CLIENT: [Viva Leisure](#)

LIGHTING: [LPA Lighting](#)

PHOTOGRAPHY: [LPA Lighting](#) / [Club Lime](#)



info@lpalighting.com
+61 3 8416 1500
www.lpalighting.com

