



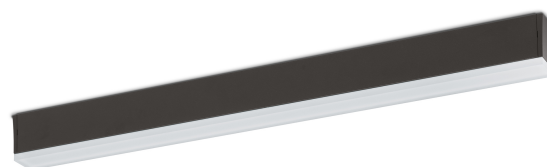
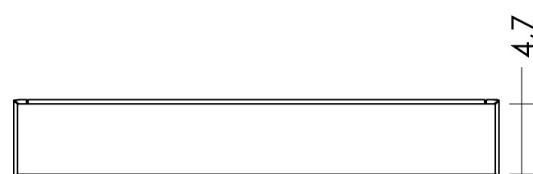
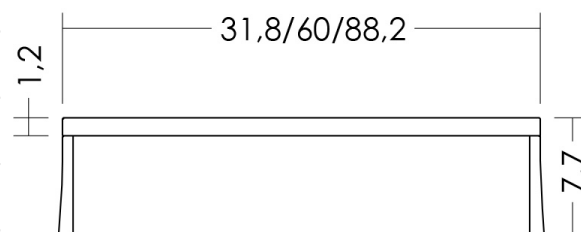
Fog_1 900 | 34 W | diffuse | Ceiling lamps Cod: FGL9POSDHB10G

Also available for wall, ceiling/wall recessed and projector



Technical Specifications

Source lamp	LED 34 W
Total wattage	38
Voltage	220-240 Vac - 50/60 Hz
Control	On/Off • dimmable on request
Luminous flux (*Source flux)	1294 lm (3120 lm*) @ 3000 K
Luminous efficacy	34 lm/W @ 3000 K
McADAM steps	3
Beam	diffuse
CRI	>90
Life time	L 70 > 50.000 h Ta 25°C L 70 > 50.000 h Ta 40°C
IP rating	67
IK rating	10
Insulation class	I



Materials

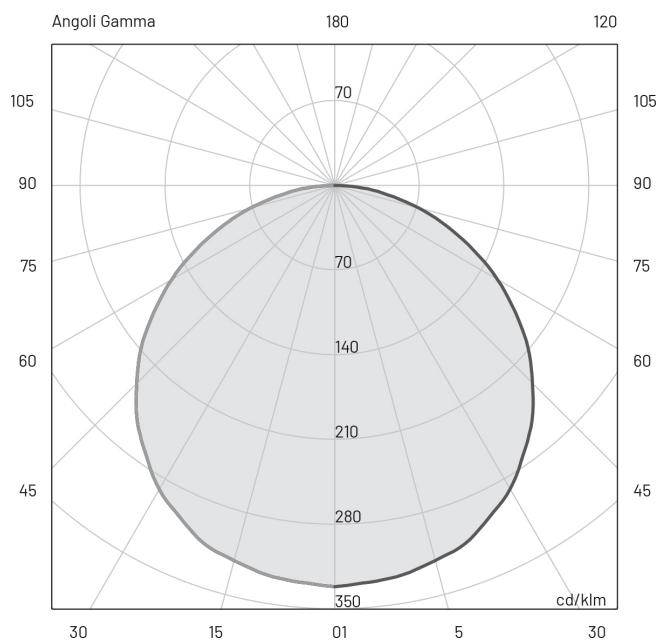
Body	Extruded aluminium EN AW6060
Diffuser	Opal glass
Finishing	Black - Polyester powder paint



E (lux)

H(m)	lux (3000 K)	Ø(m)
1.00	169	3.21
2.00	42	6.42
3.00	19	9.62
4.00	11	12.83
5.00	7	16.04

Photometry



Included accessories

- 0.5 m length cable -05RN-F
- Single connection IP68