



Wall Mira 45 | 2 W | 180° | Wall recessed

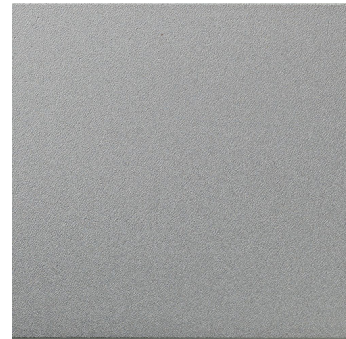
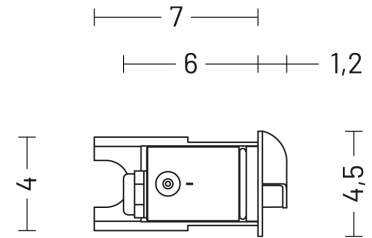
Cod: MI20IPATNB7Z1

Also available for floor recessed



Technical Specifications

Source lamp	LED 2 W
Total wattage	2
Voltage	24 Vdc
Control	Power supply not included • dimmable on request
Luminous flux (*Source flux)	14 lm (160 lm*) @ 4000 K
Luminous efficacy	7 lm/W @ 4000 K
McADAM steps	3
Beam	180°
CRI	>90
Life time	L 70 > 50.000 h Ta 25°C L 70 > 50.000 h Ta 40°C
Energy efficiency class	A++
IP rating	66
IK rating	8
Insulation class	III

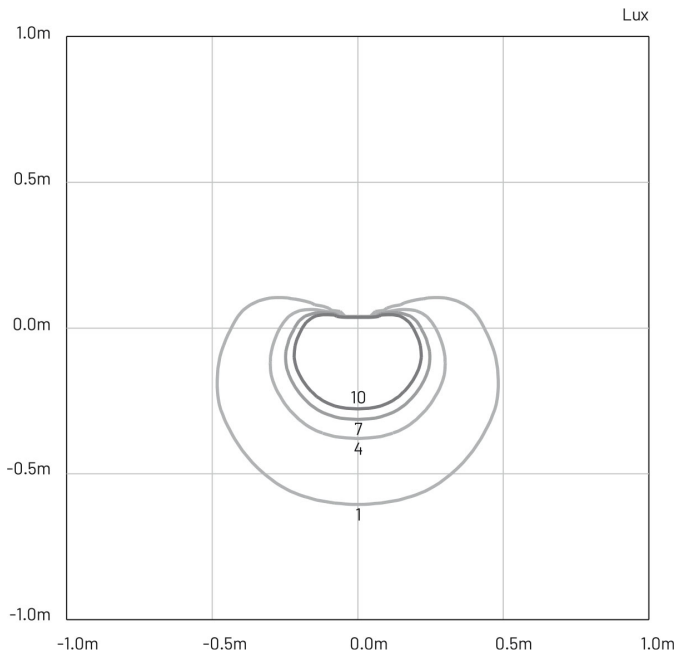


Materials

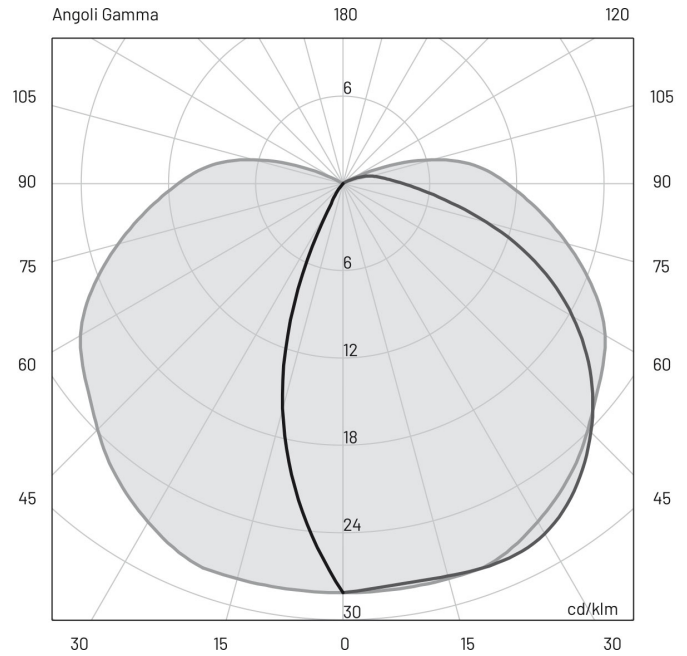
Body	Extruded aluminium EN AW6060
Diffuser	Opal polycarbonate
Finishing	Inox - Anodized

For office locations visit www.lpalighting.com

Isolux



Photometry



Included accessories

- 1 m length cable -05RN-F
- Housing box

Available accessories

0409BT016	Transformer _ 24 Vdc - 100 W Connect up to 30 devices
0409BT014	Transformer _ 24 Vdc - 12 W Connect up to 4 devices
0409BT015	Transformer _ 24 Vdc - 25 W Connect up to 8 devices

For office locations visit www.lpalighting.com