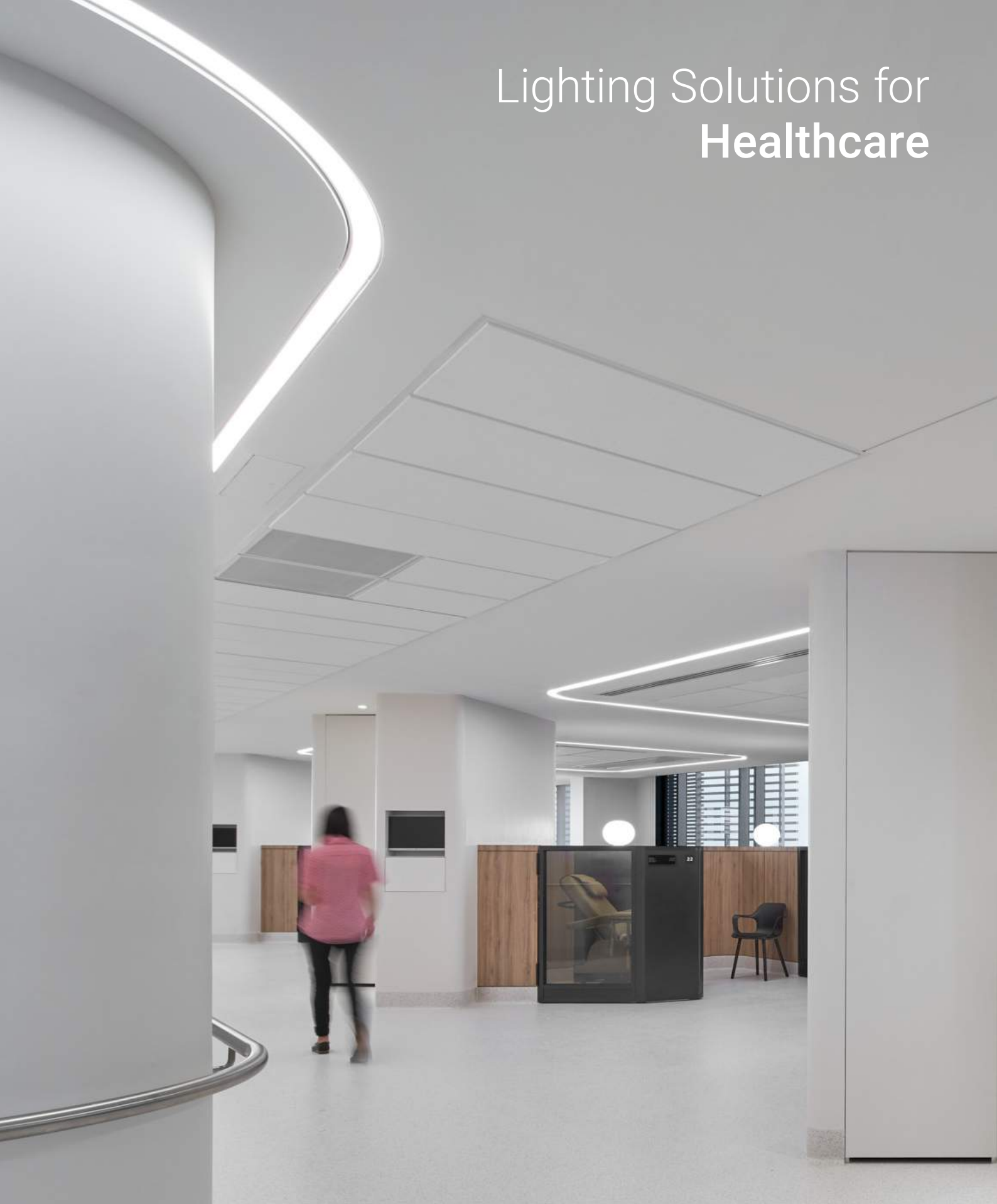


Lighting Solutions for Healthcare





Providing Solutions For Healthcare

For over 30 years LPA Lighting and Energy Solutions have been providing lighting solutions for healthcare environments. Our vision for healthcare is to provide modern, energy-efficient lighting solutions that assist in the treatment and recuperation of patients.

Our approach to lighting healthcare facilities is to understand the nature of the procession as well as the needs of the people. Whether it be tunable soft light for a healing environments, bright light for laboratories, lighting that offers safety and comfort, or specific technical lighting requirements for theatres and operating rooms, such as Cyanosis Observation Index (COI).

Considering the 24/7 needs of the medical staff and patients, we provide the best possible light whilst managing the balance between light quality and energy efficiency. We work with our suppliers and manufacturers to be at the forefront in finding efficiencies in product, both in hardware quality and to optimise performance.

Our highly qualified team are committed to the needs of our clients, providing expertise and experience from initial consultation to after sales support. We are here to provide our clients with the best possible outcome in lighting solutions so they in turn can provide the best possible care for their staff and patients.

LPA also offers a range of innovative energy management technologies offering absolute visibility over all elements of your extended system. From real time control capabilities to pre-emptive maintenance, financial forecasting to compliance and sustainability reporting, we have solutions to assist in optimising energy usage.



What We Offer

Our flexible model allows our clients to choose from individual services or combined services to create a customer-orientated lighting solutions package. We do the work to ensure you are provided with a solution that gives the best possible lighting results.

Client Needs

In the healthcare industry we know that there is a need to balance the quality of care with cost efficiency. We work with you to understand the challenges, finding cost effective solutions and operational efficiencies whilst also maintaining a high quality of care.

Design Services

Lighting improves both patient and staff experiences within the healthcare environment. We will provide customised and impactful solutions that consider zones, human interaction and fixtures that achieve the best possible lighting effect whilst reducing maintenance and energy consumption.

Global Sourcing

We are able to leverage significant global reach with offices in the UK, the USA, Australia and Asia. This global reach extends to product sourcing where we have supplier relationships with lighting manufacturers from across the globe. Working with our suppliers and manufacturers, we are always looking to find efficiencies in product quality and performance for our clients.

Project Management

Working as part of the clients extended team we manage supply, delivery, approvals and product lead times to ensure deadlines and budgets are met.

Distribution and Logistics

Our distribution and logistics team plan, implement and control stock to ensure an efficient and effective service to our clients.

Implementation Support

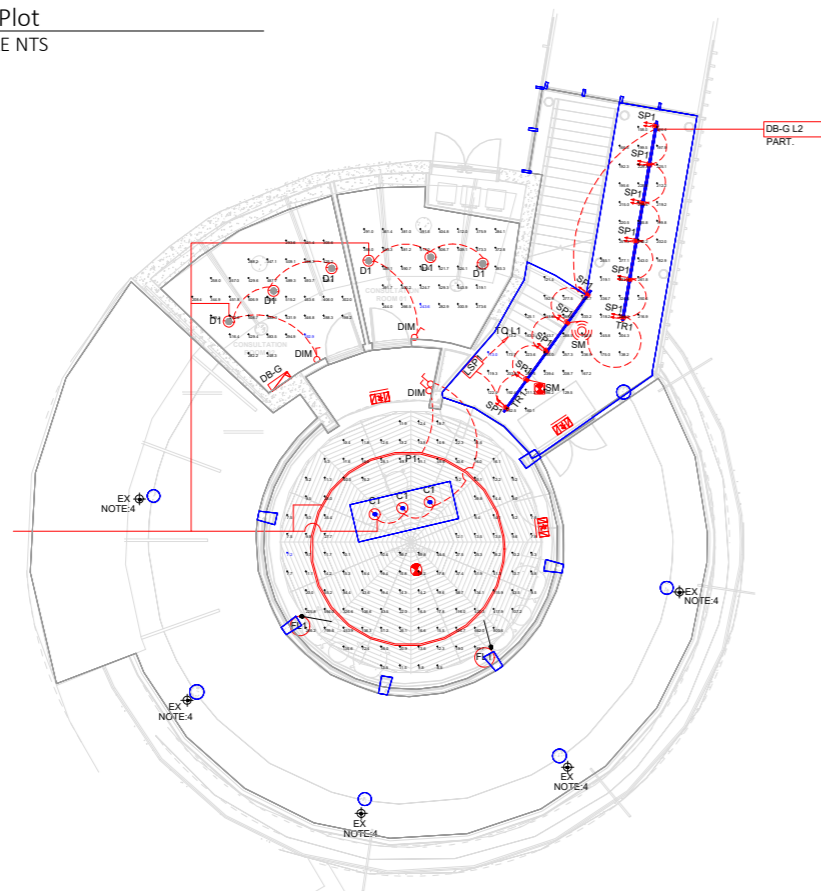
We directly support the joint project teams throughout the installation process to ensure correct setup as per the lighting plan.

Relationship Management

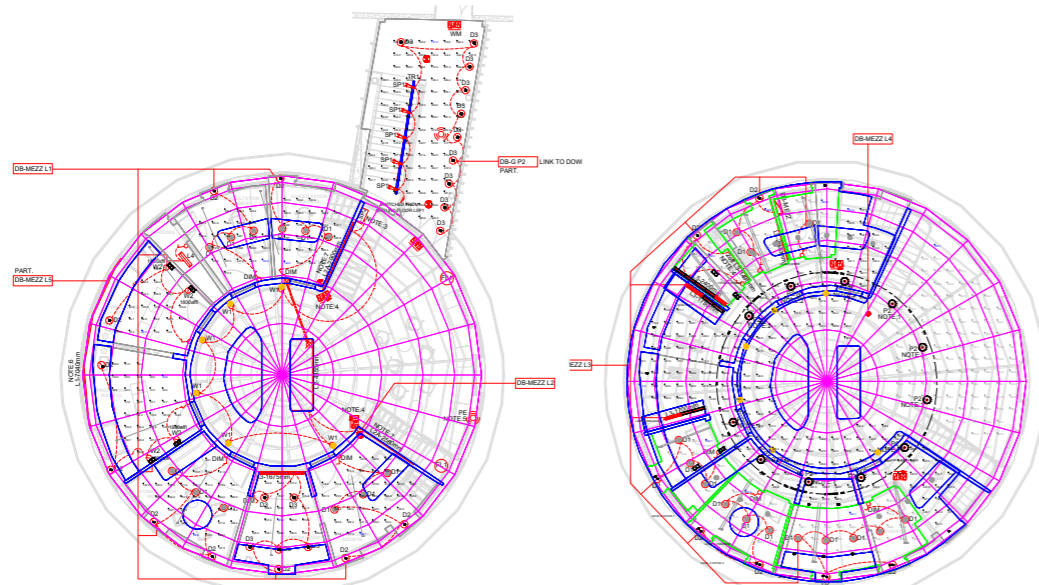
We believe in the quality of our products. They are backed with supplier and or extended warranty periods for up to 5 years. We provide fresh opportunities to continue cost reduction in maintenance and energy consumption for longer term periods to save our clients time and money.



1 Lux Plot
SCALE NTS



GROUND FLOOR LIGHTING SERVICES LAYOUT
SCALE 1:100@A1



LEVEL 1 LIGHTING SERVICES LAYOUT
SCALE 1:100@A1

MEZZANINE LIGHTING SERVICES LAYOUT
SCALE 1:100@A1

Design Services

Design is at the heart of everything we do. The objective of lighting design is the human response, to see clearly and without discomfort.

Our expert and passionate designers and engineers have experience in developing lighting solutions that support the healing environment of healthcare facilities by considering the effect of lighting on patient care and staff needs.

It is important to create a calm and relaxing environment for patients in contrast to providing bright and functional light that is required for surgery theatres and research laboratories. Our team understands the different areas within a healthcare facility and will work with the client to ensure the designs support all areas and operational requirements of the facility.

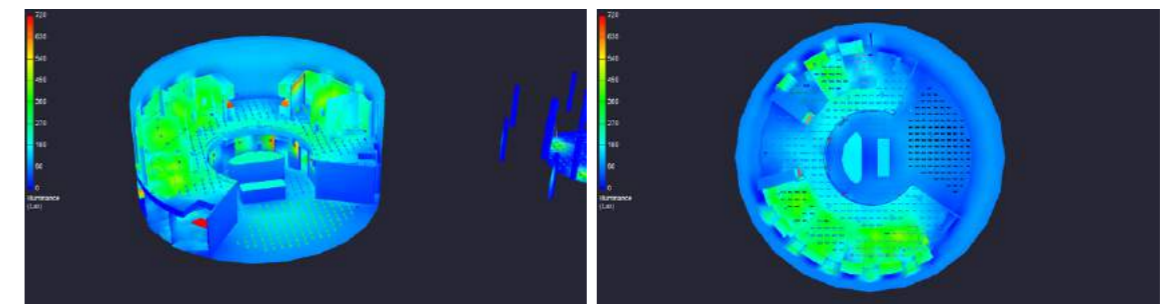
Reducing energy and maintenance costs is an essential need in healthcare facilities, especially those that operate over a 24 hour cycle. Integration with control systems provide the flexibility necessary to meet the requirements within the healthcare sector and is a priority factor when selecting the appropriate fixtures.

The day to day design requirements of specific projects will be managed, designed and documented by the LPA design team in consultation with the client and their design team.

The end result will be a design package that meets all requirements as specified by the client that also improves the overall lighting effect whilst reducing energy consumption.

Our lighting design would constitute the following:

- A documented lighting design to include both high level (RCP) and low level (Joinery) documentation
- Suggested joinery detailing for integrated lighting
- Corresponding BCA Calculation
- Lighting schedule outlining the specifications of proposed fittings
- Fitting datasheet pack
- Lighting calculation outlining achieves lux levels and uniformity in accordance with Australian Standards AS1680



General Area Lighting

General lighting plays a crucial role in the recovery process in hospitals, care homes, medical offices, rehabilitation centres etc. The correct lighting levels can make patients feel more comfortable and secure, it also provides a pleasant atmosphere for staff and visitors. Direction of light, light intensity and light colour all play a part in creating the perfect atmosphere in general areas.

Comfort

Lighting plays a vital role in the mental and physical well-being of all humans. The right lighting synchronises the bodies natural rhythms. Lighting provides a base for sleep-wake rhythms. If there is not enough daylight patients can experience insomnia making them less active and adversely affect their well being. Daylight can be used in partnership with artificial lighting controls to simulate movement of natural daylight, conserving energy and enhancing the quality of light for patients and staff.

Colour rendering

Colour Rendering Index (CRI) is a quantitative measure of how colours look under a light source when compared with sunlight. In clinical areas lighting should have a CRI of no less than 80 and have a CCT of 4000K. In specialist areas such as operating theatres CRI>90 is required. Correct colour is critical in laboratories, hospitals and medical centres.

Our product range is available in CRI 90+ for better colour rendering, and Cyanosis compliant to the Australian & New Zealand Standard (AS NZS 1680.2.5) requirements for healthcare environments.

Glare

Well balanced lighting levels and good colour rendering help prevent distracting reflections and glare on surfaces, including equipment. Often medical facilities have equipment with digital displays therefore prevention of glare is important for doctors, dentist and specialists.

Our range of products include low glare options suitable for healthcare facilities.

Safety

Lighting is especially important for safety, especially for the elderly who are susceptible to glare and may have lower visibility.

Uniform light levels make sure that dark spots are well illuminated ensuring safety for patients and staff through the general areas. Emergency and escape sign luminaires that are clearly visible are also incredibly important in ensuring the safety of staff and patients.

We also offer a range of anti-ligature fittings for institutions that require this level of safety for their patients.

Lighting Controls

Lighting controls such as dimmers are a good option for patient rooms, allowing patients to have control over their individual light levels aiding their recuperation. Lighting controls from dimming to motion sensors can save energy by using artificial lighting only where and when needed, they also ensure that patients and staff have the correct light when and where they want it.

Product

At LPA, we are constantly reviewing and improving our product design to ensure high quality, energy efficiency along with leading-edge technologies to deliver innovative solutions for healthcare environments.

To ensure product quality and safety, our medical range has been tested in an accredited testing laboratory according to AS NZS 60598.1-2017 standard requirements, and to determine product performance all our products have been subject to photometrical and spectral testing.





VISI DOWNLIGHT



Visi is an everyday downlight made for professional applications. Once recessed into the ceiling the Visi blends in effortlessly with its narrow trim and provides an anti-glare comfort light. However, trim size is no reflection on performance and Visi provides a full range of illumination level in both fixed and adjustable design.



VISI DR-A074

Cut Out: Ø130mm Dimensions: Ø140x141mm

Model	Source Power (W)	System Power (W)	Source Lumen (Lm) (CRI>90, 3500K)	System Lumen (Lm) / Beam Angle (CRI>90, 3500K)			
				Narrow (14°)	Narrow (20°)	Medium (42°)	Wide (55°)
DR-A074-J-COI	17	20	2207	1645	1613	1608	1530
DR-A074-K-COI	25	30	3247	2078	2026	2021	1988
DR-A074-L-COI	32	37	3750	2487	2477	2424	2356
CRI	CCT	Material	LED Lifetime	Colour	Voltage	Dimming	
>90	3500K	Aluminium	50,000 hrs (L70)	BK / WH	220-240V	Non-Dim	

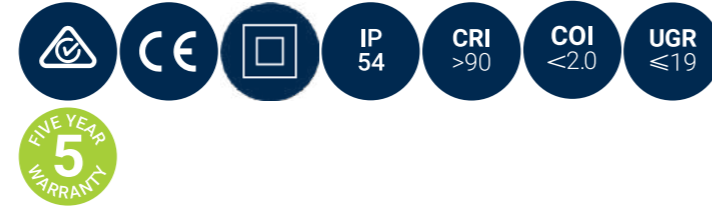
VISI LED-QP01

Cut Out: Ø78mm Dimensions: Ø91x118mm

Model	Source Power (W)	System Power (W)	Source Lumen (Lm) (CRI>90, 3500K)	System Lumen (Lm) / Beam Angle (CRI>90, 3500K)		
				Medium (27°)	Medium (37°)	
LED-QP01-A-COI	6	8	783	473	490	
LED-QP01-B-COI	12	15	1503	674	700	
CRI	CCT	Material	LED Lifetime	Colour	Voltage	Dimming
>90	3500K	Aluminium	50,000 hrs (L70)	BK / WH	220-240V	Non-Dim

HEMER DOWNLIGHT

The Hemer is a modern and compact downlight ideal for commercial applications. Offering flexibility through its range of sizes and power wattages, the Hemer series is a great choice to ensure your lighting layout will look its best. Available reflector colours are white, black, silver and gold.



HEMER DR-A288

Cut Out: Ø100mm Dimensions: Ø110x78mm

Model	Source Power (W)	System Power (W)	Source Lumen (Lm) (CRI>90, 3500K)	System Lumen (Lm) / Beam Angle (CRI>90, 3500K)		
				Narrow (23°)	Medium (35°)	Wide (61°)
DR-A288-H-COI	12	15	1637	990	960	941
DR-A288-J-COI	18	21	2230	1340	1230	1288

CRI	CCT	Material	LED Lifetime	Colour	Voltage	Dimming
>90	3500K	Aluminium	50,000 hrs (L70)	BK / WH	220-240V	Non-Dim

HEMER DR-A289

Cut Out: Ø150mm Dimensions: Ø160x100mm

Model	Source Power (W)	System Power (W)	Source Lumen (Lm) (CRI>90, 3500K)	System Lumen (Lm) / Beam Angle (CRI>90, 3500K)		
				Narrow (24°)	Wide (46°)	Wide (55°)
DR-A289-J-COI	17	20	2317	1711	1657	1607
DR-A289-K-COI	25	30	3104	2349	2295	2256

CRI	CCT	Material	LED Lifetime	Colour	Voltage	Dimming
>90	3500K	Aluminium	50,000 hrs (L70)	BK / WH	220-240V	Non-Dim





Clinical Areas

Clinical observation is an important part of medical diagnosis. Ensuring the correct light levels in operating theatres and recovery areas aids the diagnosis of life threatening conditions.

Cyanosis Observation Index (COI)

Cyanosis refers to a bluish discolouration to the skin and mucous membranes. This is usually caused by low oxygen levels in the red blood cells or by problems getting oxygenated bloody to the body. It is vital for medical staff to be able to reliably detect the onset of cyanosis by visual observation.

For cyanosis observation, medical lighting must adhere to Australian & New Zealand standards AS/NZS 1680.2.5 where the properties of a light source is measured for suitability for visual detection of cyanosis in a patient. The lower the value, the better suited for cyanosis observation; this rating cannot be greater than 3.3.

Cyanosis is a visual cue of a medical symptom based on an observable colour. Lighting conditions and quality are an essential component on whether the observation is true and correct. It is particularly important that the light colour (Colour Rendering Index) factors are considered.

COI Lighting with high colour rendering creates optimal visual conditions for monitoring the patient. Cold white lighting with high colour rendering is made for open surgery, also helpful for cleaning. Sterile environments must also have quick and easy to clean fittings such as our cleanroom fitting.

Consistent operation and standard lighting levels are important for working through the night for the productivity of the staff increasing alertness and activity levels. Studies have shown that the light (natural or artificial) can have a positive effect on humans improving stress levels, mood and emotions as well as improving productivity for staff.

Similar to the requirements of the ward and general areas, operating theatres and laboratories require light fittings that are high in efficacy, produce minimum glare and offer flexibility in their function.

CLEANROOM

The LPA Cleanroom fitting has been designed to meet the requirements of healthcare installation suitable for cleanroom application offering easy, quick cleaning, long lifetime and high colour rendering.

A simple and modern fitting achieving optimal performance and energy efficiency. With a variety of illumination levels and power outputs, our range of luminaires deliver flexibility ensuring the best lighting outcome for every client.

Available in IP44 or IP65 and a COI version perfect for hygiene and medical environments. The Cleanroom series has a projected lamp life of L70 (10K) >60,000 hours. Available in t-bar and plaster recessed installation.



CLEANROOM - IP44

Dimensions: 595x295x88mm

Model	System Lumen	System Power	CCT	Beam Angle
TR-CL60C-23-4K-COI (IP44)	1900Lm	23W	4000K	115°
CRI	Material	Voltage	Colour	Dimming Options
>90	Aluminium	220-240V	White	Available on request

CLEANROOM - IP44

Dimensions: 1195x295x88mm

Model	System Lumen	System Power	CCT	Beam Angle
TR-CL12C-35-4K-COI (IP44)	3300Lm	35W	4000K	115°
TR-CL12C-50-4K-COI (IP44)	4800Lm	50W	4000K	115°
CRI	Material	Voltage	Colour	Dimming Options
>90	Aluminium	220-240V	White	Available on request

CLEANROOM - IP65

Dimensions: 595x295x88mm

Model	System Lumen	System Power	CCT	Beam Angle
TR-CL60-23-4K-COI (IP65)	1900Lm	23W	4000K	115°
CRI	Material	Voltage	Colour	Dimming Options
>90	Aluminium	220-240V	White	Available on request

CLEANROOM - IP65

Dimensions: 1195x330x90mm

Model	System Lumen	System Power	CCT	Beam Angle
TR-CL12-35-4K-COI (IP65)	3300Lm	35W	4000K	115°
TR-CL12-50-4K-COI (IP65)	4800Lm	50W	4000K	115°
CRI	Material	Voltage	Colour	Dimming Options
>90	Aluminium	220-240V	White	Available on request

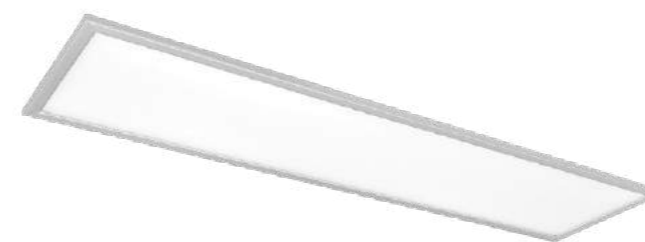
The information presented in this document is for information purposes only and does not constitute any obligation on our part. We reserved the right to make technical and design changes at any time and without notice.





INDUS II PANEL

LED panels revolutionised lighting in commercial and retail spaces and our market-leading products and options are ready to meet your every application. Our quality reflects our focus on flexibility; a flexibility that ensures the best lighting outcome for every client. The ultra slim profile fits seamlessly into any workplace and can be T-bar, plaster recessed, surface mounted or suspended. The micro-prismatic diffuser delivers low-glare and our LED selection ensures excellent colour rendering to further enhance the comfort and efficiency of the lit space.

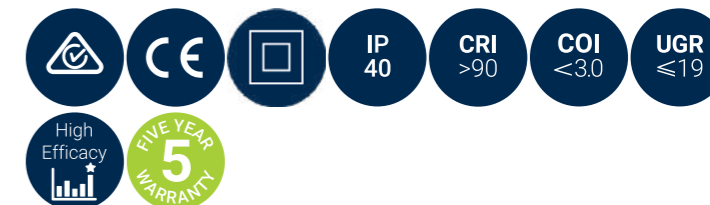


PA-INDR2



PA-INDR2

PA-INDS2



INDUS II - RECTANGLE (595mm)

Dimensions: 595x295x10mm

Model	System Lumen	System Power	CCT	Beam Angle
PA-INDR2-18	1800Lm	18W	4000K	100°
CRI	Material	Voltage	Colour	Dimming Options
>90	Aluminium	220-240V	White	Non-Dim

INDUS II - RECTANGLE (1195mm)

Dimensions: 1195x295x10mm

Model	System Lumen	System Power	CCT	Beam Angle
PA-INDR2-26	2340Lm	26W	4000K	90°
PA-INDR2-38	3500Lm	38W	4000K	90°
PA-INDR2-50	5100Lm	50W	4000K	90°
CRI	Material	Voltage	Colour	Dimming Options
>90	Aluminium	220-240V	White	Non-Dim

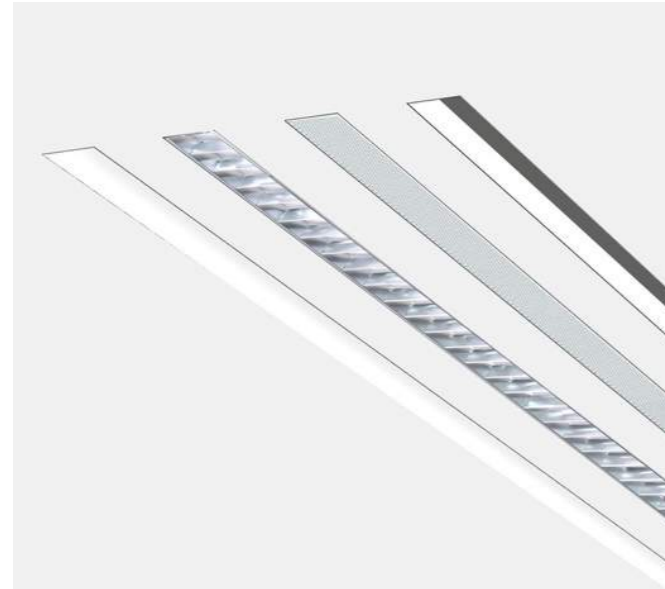
INDUS II - SQUARE

Dimensions: 595x595x10mm

Model	System Lumen	System Power	CCT	Beam Angle
PA-INDR2-26	2340Lm	26W	4000K	90°
PA-INDR2-38	3500Lm	38W	4000K	90°
CRI	Material	Voltage	Colour	Dimming Options
>90	Aluminium	220-240V	White	Non-Dim

MATRIC M3

The Matric M3 is a recessed mounted LED luminaire for frameless installation in plasterboard ceilings with a direct-only light distribution. This 55mm profile can be mounted with or without a shadow gap during the installation process. The Matric has been designed to create a variety of looks including simple straight lines, connected straight lines shapes or polygonal shapes making this profile the perfect solution for customised creations.



MATRIC M3 - RECESSED FRAMELESS

Cut Out: 56x1000mm Dimensions: 1000x55x75mm

Model	System Lumen	System Power	CCT	Diffuser
LM3OEE-935E-L1000	1610Lm/M	16W/M	3500K	Opal
LM3OEE-935M-L1000	2520Lm/M	26W/M	3500K	Opal
CRI	Material	Voltage	Colour	Dimming Options
>90	Aluminium	220-240V	Aluminium	Available on request

MATRIC F3

The Matric F3 is a recessed mounted LED luminaire with surrounding frame for installation in ceilings with cut-out openings. Available in direct-only light distribution, the 55mm Matric profile is designed to create simple straight lines, connected straight lines shapes or polygonal shapes. The opal diffuser made of acrylic glass is perfect for general lighting. Combined with a range of accessories, the Matric is ideal for custom-made solutions to cover any project requirement.



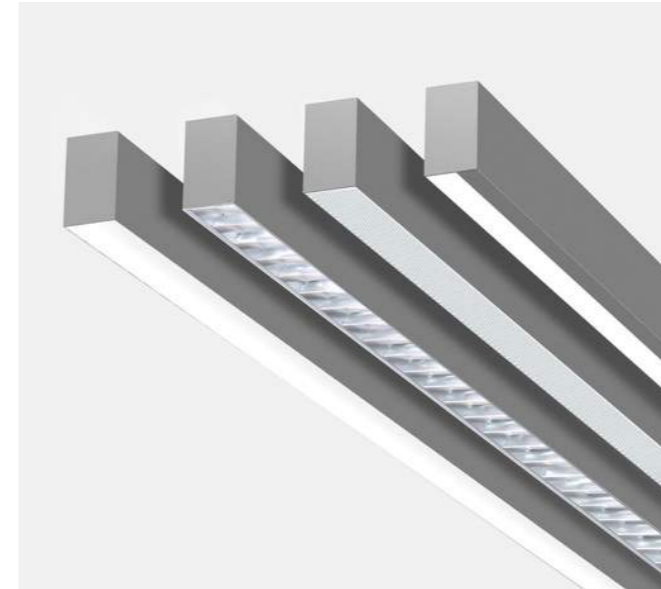
MATRIC F3 - RECESSED

Cut Out: 60x1000mm Dimensions: 1000x55x75mm

Model	System Lumen	System Power	CCT	Diffuser
LF3OEE-935E-L1000-IP54	1610Lm/M	16W/M	3500K	Opal
LF3OEE-935M-L1000-IP54	2520Lm/M	26W/M	3500K	Opal
CRI	Material	Voltage	Colour	Dimming Options
>90	Aluminium	220-240V	BK / WH / SIL	Available on request

MATRIC A3

Designed for architectural aesthetic and high performance, the Matric A3 is a surface mounted LED luminaire with direct-only light distribution. The Matric is designed to create simple straight lines, connected straight lines shapes or polygonal shapes. Available with a opal or microprismatic diffuser to suit general lighting applications. The sleek design paired with a range of accessories makes the Matric series the perfect selection for custom profile creations.



MATRIC A3 - SURFACE

Dimensions: 1000x55x75mm

Model	System Lumen	System Power	CCT	Diffuser
LA3OEE-935E-L1000-IP54	1610Lm/M	16W/M	3500K	Opal
LA3OEE-935M-L1000-IP54	2520Lm/M	26W/M	3500K	Opal
LA3MEE-935E-L1000-IP54	1500Lm/M	16W/M	3500K	Microprismatic
LA3MEE-935M-L1000-IP54	2350Lm/M	26W/M	3500K	Microprismatic
CRI	Material	Voltage	Colour	Dimming Options
>90	Aluminium	220-240V	BK / WH / SIL / AL	Available on request



CALEO W4

The Caleo is a LED wall mounted luminaire with direct-indirect light distribution. Available in a range of surface finishes and with an opal and microprismatic diffuser to suit commercial and general lighting applications. Its contemporary design paired with a range of accessories makes the Caleo an excellent choice for custom profile creations.



CALEO W4 - WALL LINEAR

Dimensions: 1000x57x125mm

Model	System Lumen	System Power	CCT	Diffuser
AW4MSG-935E-L1000	2170Lm/M	28W/M	3500K	Microprismatic
AW4MSG-935M-L1000	3040Lm/M	39W/M	3500K	Microprismatic
AW4OSG-935E-L1000	2370Lm/M	28W/M	3500K	Opal
AW4OSG-935M-L1000	3320Lm/M	39W/M	3500K	Opal

CRI	Material	Voltage	Colour	Dimming Options
>90	Aluminium	220-240V	BK / WH / SIL	Available on request

CALEO W5

Designed for medical lighting, the Caleo W5 is a wall mounted luminaire perfect for patient and resident rooms. Its direct-indirect light distribution is ideal for general lighting. Other options available such as: Ambient Light, Reading Light and Nurse Light. Available in a range of surface finishes and control options, the Caleo is an excellent choice for medical solutions.



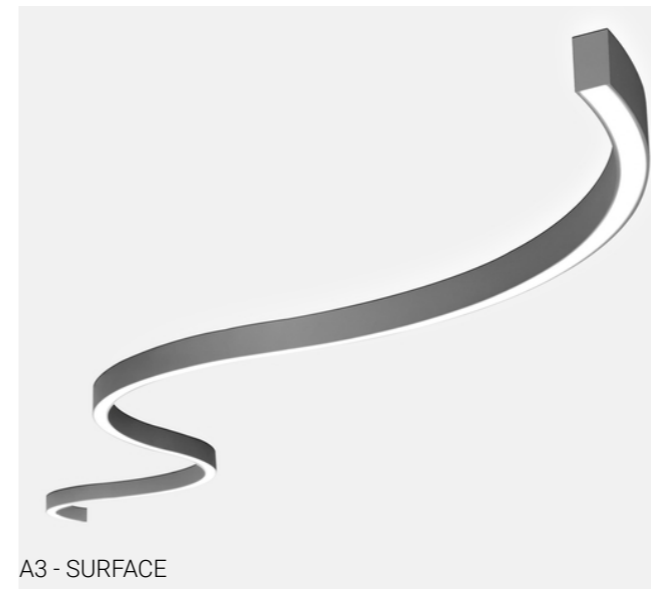
CALEO W5 - WALL

Dimensions: 1050x200x35mm, 35x400mm

Model	System Lumen	System Power	CCT	Diffuser/Beam Angle
AW5MEE-935M-L1050	6257Lm/M	85W/M	3500K	Microprismatic/Asymmetric

CRI	Material	Voltage	Colour	Dimming Options
>90	Aluminium	220-240V	BK / WH / SIL	Available on request





A3 - SURFACE

LIQUID LINE

The Liquid Line is a uniquely flexible light structure for architectural lighting. The individual elements can be produced as a linear extrusion, ring format or curved extrusion both horizontally and vertically to combine into one system. Each system module functions as a stand-alone version that can be optionally linked to create a continuous line of light with different configurations. Available in recessed, surface and pendant variants. In addition to the extensive range of standard items, the Liquid Line can be tailor-made to suit any design space.

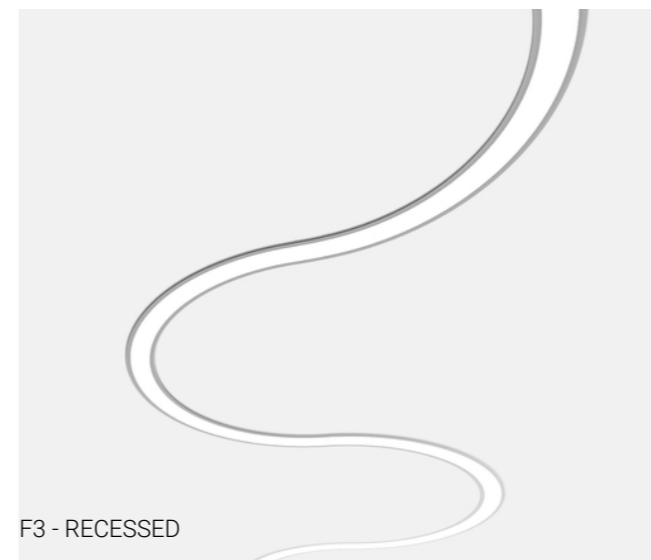


LIQUID LINE A3 - SURFACE

Dimensions: 1000x60x80mm

Model	System Lumen	System Power	CCT	Diffuser
QA3ASE-940E-STRUCTURE-L1000	1240Lm/M	15W/M	4000K	Microprismatic
QA3OSE-940E-STRUCTURE-L1000	1040Lm/M	15W/M	4000K	Opal

CRI	Material	Voltage	Colour	Dimming Options
>90	Aluminium	220-240V	BK / WH / SIL	Available on request



F3 - RECESSED

LIQUID LINE

The Liquid Line is a uniquely flexible light structure for architectural lighting. The individual elements can be produced as a linear extrusion, ring format or curved extrusion both horizontally and vertically to combine into one system. Each system module functions as a stand-alone version that can be optionally linked to create a continuous line of light with different configurations. Available in recessed, surface and pendant variants. In addition to the extensive range of standard items, the Liquid Line can be tailor-made to suit any design space.



LIQUID LINE F3 - RECESSED

Dimensions: 1000x70x80mm

Model	System Lumen	System Power	CCT	Diffuser
QF3ASE-940E-L1000	1820Lm/M	24W/M	4000K	Microprismatic
QF3OSE-940E-L1000	1510Lm/M	24W/M	4000K	Opal

CRI	Material	Voltage	Colour	Dimming Options
>90	Aluminium	220-240V	BK / WH / SIL	Available on request

Luminaires for Secure Premises

When considering the design requirements for high care facilities, it is essential to ensure the security and safety of patients.

For mental health care facilities anti ligature light fittings must be used to eliminate points where items can be looped or tied to create a point of ligature. Anti-ligature products prevent anyone from using them as a means from which to inflict harm to themselves or others. Failure to prevent this may result in self-harm or even loss of life.

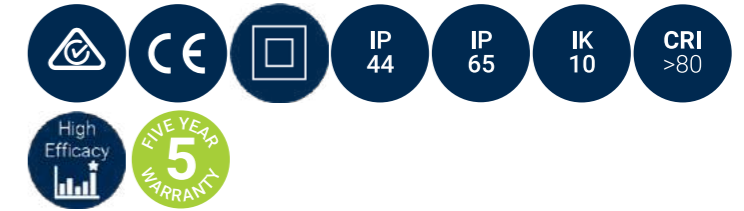
Vandal resistant fittings must also be used in high care facilities such as correctional establishments, law courts and psychiatric hospitals to ensure the luminaire can not be smashed or broken and the segments used for self-harm or harm to others.

Our range of vandal resistant and anti-ligature fittings meet the relevant certifications for high care facilities such as care homes, custodial units, prisons and mental health facilities.



SENSPOT DOWNLIGHT

Senspot is a compact vandalproof downlight perfect for exterior applications. Available in IP44 and IP65 both in a standard and vandalproof version, the Senspot downlight offers durability and security for commercial and medical environments.



SENSPOT

Cut Out: Ø160mm Dimensions: Ø174x70mm

Model	Lumen Output	Power	CCT	Beam Angle
Senspot 1700	1300Lm	12W	4000K	-
Senspot 2200	1630Lm	16W	4000K	-

CRI	Material	Voltage	Colour	Dimming Options
>80	Aluminium	220-240V	BK / WH / GR	Available on request



5382 0400



5381 0400

P600 SERIES

Offering a comprehensive range of bedhead luminaires, the P600 series is an ideal choice for penitentiary environments. Available in two sizes, this series can be surface mounted easily to the wall. Its compact and vandal-resistant body provides anti-ligature protection and security lighting for indoor and outdoor premises.



P600 E

Model	Lumen Output	Power	CCT	Dimensions
5382 0400	80Lm	5W	4000K	120x150mm
5381 0400	80Lm	5W	4000K	110x135mm

CRI	Material	Voltage	Colour	Dimming Options
>80	Aluminium	220-240V	White	Available on request



TITAN COMPACT

Designed to withstand extreme vandalism, the Titan Compact is a sleek and elegant architectural wall light. Available in multiple lengths in a wall or corner mount version. The Titan is perfect for illuminating public and commercial spaces.



TITAN COMPACT (Wall Mounted)

Dimensions: (L)x60x110mm

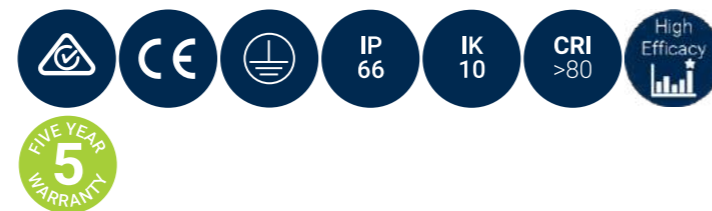
Model	Lumen Output	Power	CCT	Length
6401 1400	800Lm	11W	4000K	375mm
6402 1400	1800Lm	21W	4000K	660mm
6403 1400	2750Lm	31W	4000K	945mm
6404 1400	3650Lm	43W	4000K	1230mm

CRI	Material	Voltage	Colour	Dimming Options
>80	Aluminium	220-240V	Grey/Inox	Available on request



RONDO BUNKER

For a timeless look that's designed to last, you can't go wrong with the Rondo series. Available in three finishes and various power wattages, the Rondo is a powerful and robust surface mount luminaire. Its IP66 rating makes this series ideal for residential properties and exterior applications. Available with a recessed mounting kit on request.



RONDO

Dimensions: Ø330x114mm

Model	Lumen Output	Power	CCT	Beam Angle
Rondo 1800	1550Lm	12W	4000K	-
Rondo 2400	2150Lm	17W	4000K	-
Rondo 3000	2550Lm	20W	4000K	-

CRI	Material	Voltage	Colour	Dimming Options
>80	Aluminium	220-240V	BK / WH / GR	Available on request





Our Healthcare Clients

These are just some of the healthcare industry clients with which LPA have collaborated. Scope of works have ranged from simple upgrades to refurbishments, departmental fit outs and complete builds.



We Build Partnerships

Contact us today to discuss your next project



lpalighting.com